

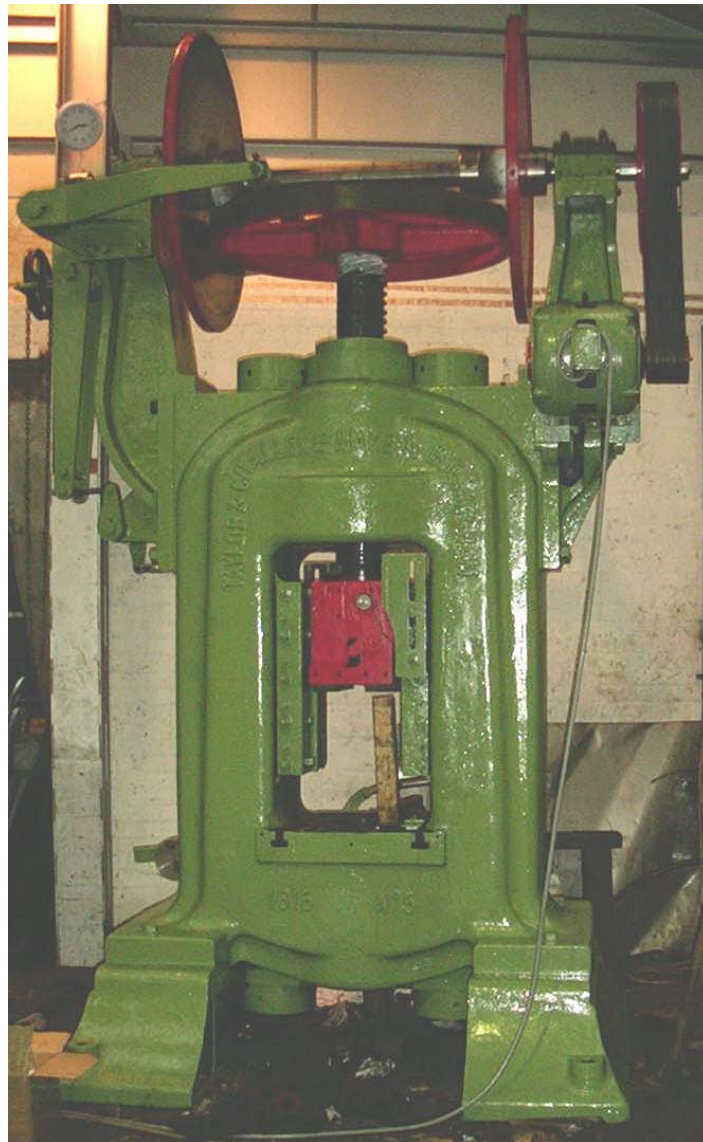


ENGINEERING LTD.

Incorporating TAYLOR & CHALLEN PRESSES and CVA-ROCKWELL HIGHSPEED DIEING PRESSES

TMA Second Hand Presses

TAYLOR & CHALLEN 1615			
Model	Taylor & Challen 1615	Operator Guard	
Type	Screw Press	Electrics	Original
Tonnage	250	Lubrication	Manual oil
Clutch	-	Slide Balance	-
Stroke	18"	Overload	-
Shut Height	-	Other	-
Slide Adj.	-	Weight	? tons
Speed (SPM)	-	Serial No.	-
Bed Size	20"x26" (L-R x F-B)	TMA Ref. No.	21655



Mistakes can be made, all specifications and sizes are not guaranteed to be correct.

It is the customer's responsibility to ensure the equipment they are purchasing is correct for their purpose.

95-111 Tyburn Road Erdington Birmingham B24 8NQ England Registered in England No. 1126971
t +44 (0)121 328 1908 f+44 (0)121 322 2017 www.TMAeng.co.uk sales@TMAeng.co.uk

Power Press Specialists

Service Spares Repairs Maintenance

Locomotives

Overhauls Repairs Spares New Locos

Machining & Fabrication

'one offs' & small batch Fabrications

